

V43- V46H

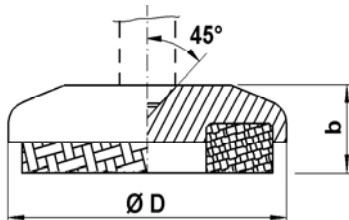


Fig. 1. V43-V46.

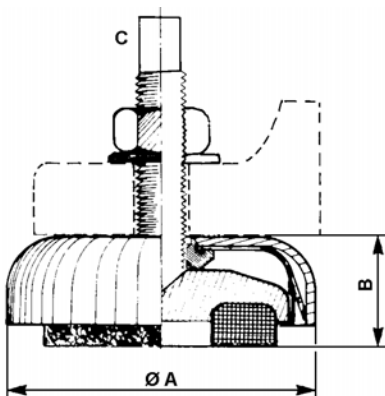


Fig. 2. V43H-V46H includes an upper housing, a levelling screw, locking nut and washer.

ALL METAL ISOLATOR

Description

All metal mount, 18/8 stainless steel wire mesh resilient cushion fixed under the foot.

Locating foot in cast iron, paint protection.

Suffix "H" with house and levelling screw.

Characteristics

Mount with a natural frequency of 25-35 Hz within a wide load range. Progressive spring rate.

Designed to absorb high static and dynamic forces for machines without base fitting.

For compression loads only.

Maximum excitation amplitude: $\pm 0,3$ mm.

Dynamic overloading: 5 g.

Amplification at resonance (Q): < 4 .

Temperature range: -90°C to $+300^{\circ}\text{C}$.

Ref.	Load range daN (\approx kg)	
	Static	Dynamic
V43, -H	50 - 350	1200
V44, -H	100 - 1500	4500
V45, -H	1000 - 3000	9000
V46, -H	2000 - 7000	21000

Applications

Vibration isolation of smaller disturbing machine tools or when a very stable support is required: turning machines, millers, grinders, drilling machines etc.

Installation

Raise the machine.

Place the mounts under the machine and fasten the bolts.

Lower the machine until it rests on the mounts.

Level the machine and lock the nuts.

Notes

For machines that generates very large dynamic forces such as power presses, punching machines etc., or where a high attenuation is required, use machine mount V43W - V46W or V43HW - V46HW.

Ref.	$\varnothing A$	B free	$\varnothing D$	b free	C	Weight (kg)	
						V43 - V46	-H
V43, -H	95	35	80	20	M 16 x 140	0,3	0,9
V44, -H	95	35	80	20	M 16 x 140	0,4	1,0
V45, -H	155	46	128	26	M 20 x 200	1,3	2,7
V46, -H	190	56	170	34	M 27 x 200	3,1	6,3