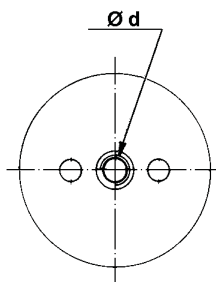
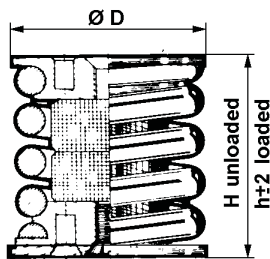
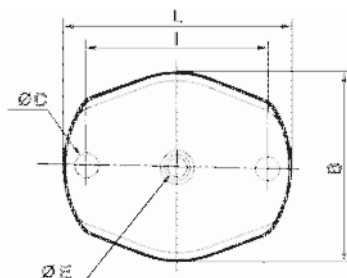


VT4412, VT4413,
VT4422, VT4423.



Ref.	D	d	H	h
VT4412, VT4413	47	M10	58	48
VT4422, VT4423	78	M12	88	78



Mounting flange, thickness = t

Ref.	L	I	B	C	F	t
VT4412, VT4413	90	69,6	60	7	11	2,5
VT4422, VT4423	140	110	100	11	13	4

ALL METAL ISOLATOR

Description

All metal isolators. Spring in high tensile steel, resilient cushions made of 18/8 stainless steel wire mesh. Schrolls: aluminium.

Weights (depending on suffix):

VT4412, VT4413: 0,13 - 0.21 kg

VT4422, VT4423: 1.20 - 1.50 kg

Characteristics

Very soft isolators designed for loading in compression only.

Maximum excitation amplitude: ± 1 mm.

Mechanical strength: 2 g.

Natural frequency: VT4412, VT4422: 6 - 8 Hz

VT4413, VT4423: 5 - 6 Hz

Amplification factor: VT4412, VT4422: < 4

VT4413, VT4423: < 5

Temperature range: -90° to $+300^{\circ}\text{C}$.

Suffix	Load range in daN (\approx kg)	
	VT4412	VT4422
-01	6 - 10	40 - 85
-02	8 - 14	65 - 125
-03	12 - 20	110 - 190
-04	18 - 30	175 - 270
-05	24 - 46	250 - 400
-06	40 - 75	360 - 560

Suffix	Load range in daN (\approx kg)	
	VT4413	VT4423
-01	5 - 7	30 - 50
-02	6 - 9	50 - 80
-03	9 - 14	80 - 125
-04	14 - 20	125 - 195
-05	20 - 30	195 - 310
-06	30 - 50	310 - 420

Applications

Isolation of machines rotating at 600 rpm and over (VT4413, VT4423) or 800 rpm and over (VT4412, VT4422) - fans, compressors, generating sets, engines etc. with or without seismic blocks. Protection of fragile equipment from vibrations.

Notes

The mounts are delivered without mounting flange, which can be ordered separately. For greater static loads, use multiple element isolators (consult us).